

TECHNICAL MEMORANDUM

DATE: OCTOBER 5, 2022

TO: STEVE SWANN, CITY ENGINEER

RE: CITY OF ATLANTIC BEACH SPEED LIMIT STUDY

Background

Crawford, Murphy, & Tilly, Inc was retained by the City of Atlantic Beach to evaluate the existing speed limits of the City's streets. A desktop review of posted speed limits was completed for all roadways to determine if the speed limits comply with the FDOT Greenbook requirements. The purpose of this study is to determine appropriate speed throughout the city limits.

Evaluation

The FDOT Greenbook requires a speed limit of 20-30 mph on all local, urban streets. CMT reviewed 233 streets within the City limits to determine the posted speed limit. All posted speed signs were 15, 20, or 25 mph which is within or below the FDOT limits. However, over 40% of the streets did not have a speed sign posted. Mayport Rd and Atlantic Blvd were taken out of the evaluation as they are posted over 30mph due to roadway characteristics and are FDOT maintained. Figure 1 shows the locations of these speeds within the City Limits.

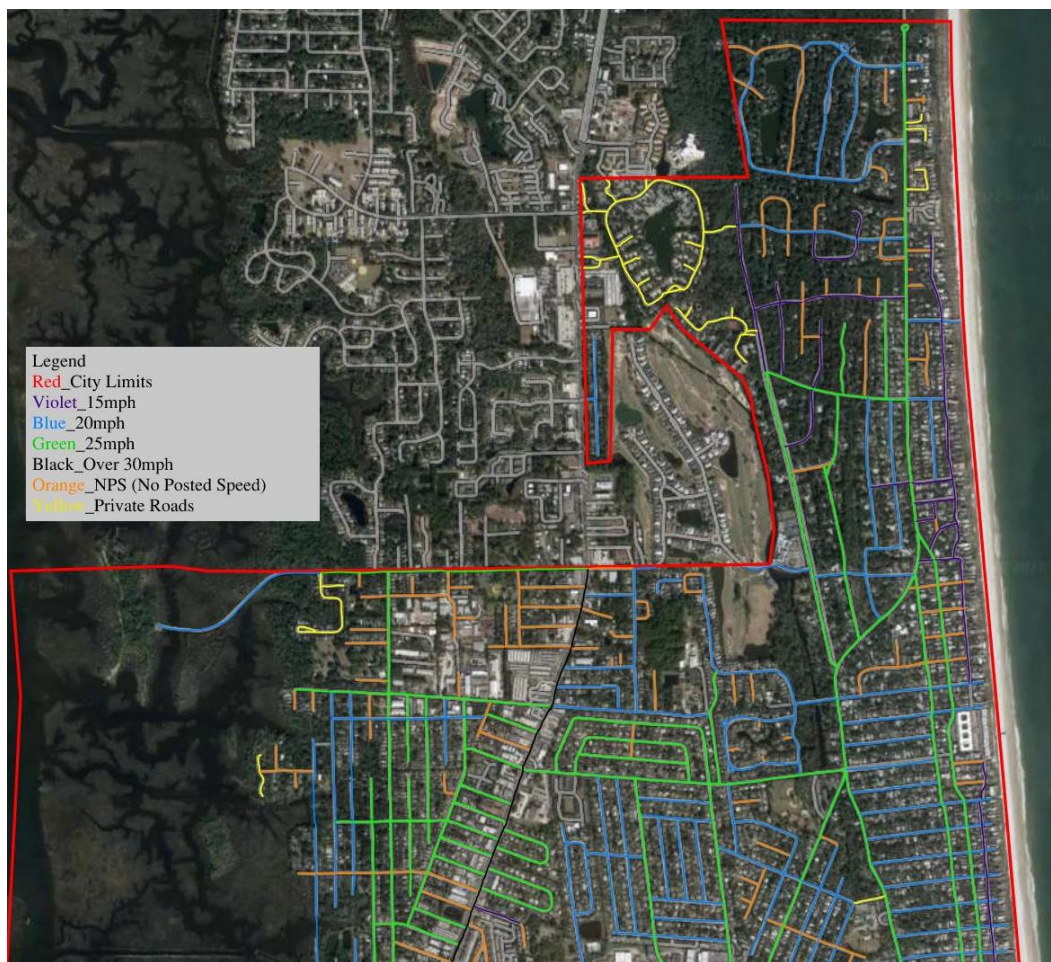


Figure 1. Posted Speed Limit Locations

Table 1 below shows the count and percentage of each posted speed limit sign as well roads without a posted speed and private roads.

Table 1. Posted Speed Limits

	15 MPH	20 MPH	25 MPH	No Posted Speed	Private Road
Count	17	65	38	94	19
Percent	7%	28%	16%	41%	8%

Recommendations

Roads with no posted speed were typically dead ends or short spans between two larger roads. While dead ends do not require a posted speed sign, longer residential roads should have a posted speed. The City should ensure posted speed signs are in place and visible and have not been removed or damaged. Additional posted speed signs will ensure a safe traveling speed along the residential routes. Table 2 is a list of recommended speed limit signs to be added to increase driver speed awareness.

Table 2. Recommendations

	Street Name	Current Speed Limit	Recommendation
1	George St	None Posted	Add Sign - 20mph
2	Edgar St	None Posted	Add Sign - 20mph
3	Robert St	None Posted	Add Sign - 20mph
4	Lewis St	None Posted	Add Sign - 20mph
5	Dudley St	None Posted	Add Sign - 20mph
6	Stewart St	None Posted	Add Sign - 20mph
7	W 6 th St	None Posted	Add Sign - 25mph
8	David St	None Posted	Add Sign - 20mph
9	12 th St	None Posted	Add Sign - 20mph
10	Oceanforest Dr W	None Posted	Add Sign - 20mph