



Engineering Department
800 Seminole Road
Atlantic Beach, FL 32233
904-247-5874

MEMORANDUM

To: Bill Killingsworth

From: Troy Stephens
Steve Swann, PE

CC: Danny Pittman
Gil Flores

Date: August 21, 2025

Re: WWTF - Initial Odor Assessment & Preliminary Action Plan

In response to a recent increase in odors generated at the WWTF, Steve, Gil and I inspected various processes and equipment that could be generating odors. There are numerous locations At the WWTF where odors can be generated. One activity that we know generated odors occurred during the recent replacement of the headworks piping. This project required diverting raw wastewater directly into our Davco sludge processing facility and then pumping to the splitter box with portable pumps. This activity, while necessary to avoid excessive spillage of raw wastewater, did result in the production of objectionable odors for several weeks.

Other activities and processes that could generate substantial odors were the focus of this initial inspection. The results of this initial inspection and a preliminary action plan are as follows:

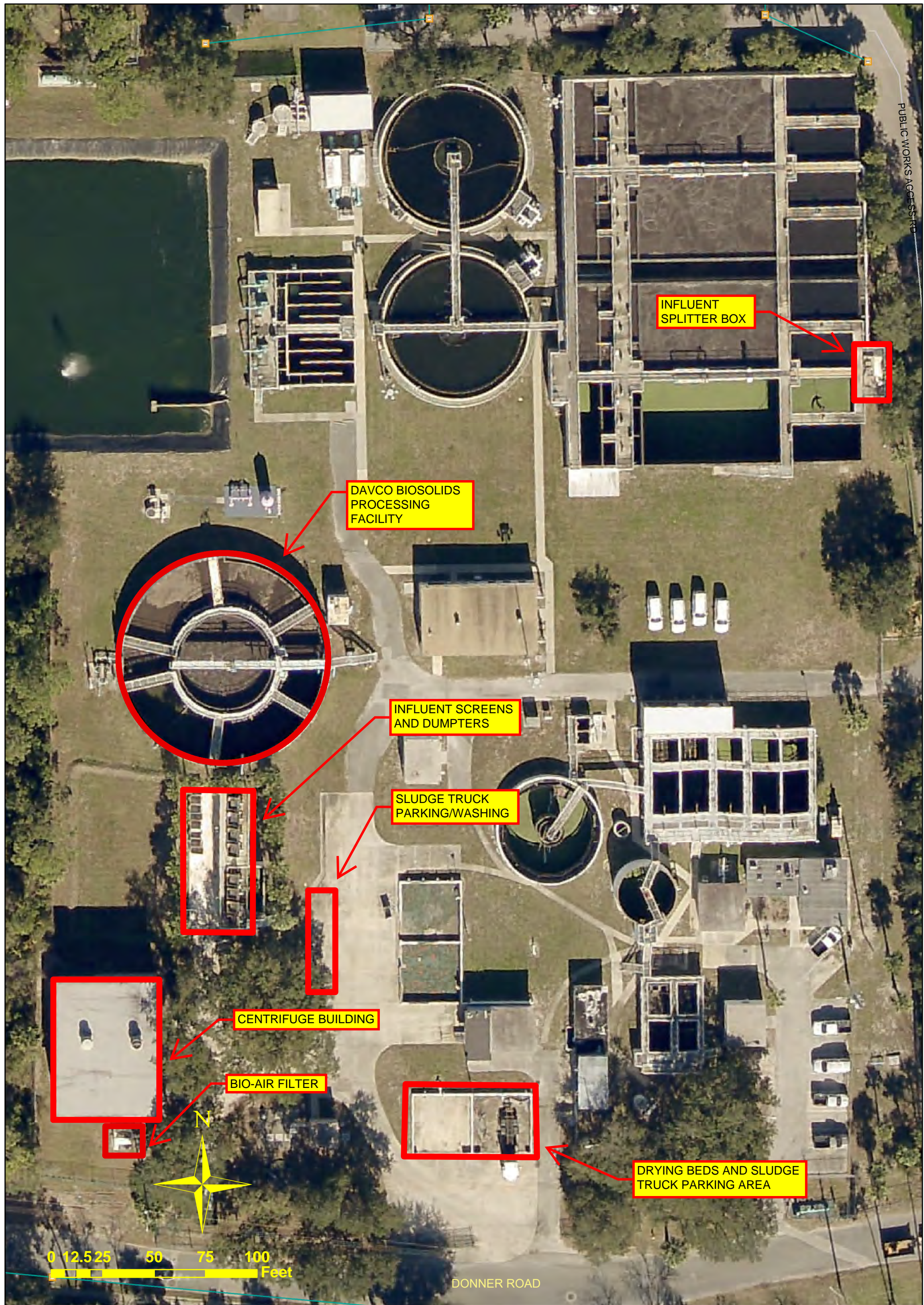
Process/Activity	Potential Cause of Odors	Preliminary Action
Influent Screens	No screen covers, Bio-Air filter no longer connected to influent screens	<ul style="list-style-type: none">- Develop plan for installing lightweight screen covers- Reconnect air lines from Bio-Air filter to the influent screens
Centrifuge Building	Bio-Air filter out of service	<ul style="list-style-type: none">- Get Bio-Air technicians onsite to inspect unit- Make identified repairs & upgrades

Davco Biosolids Processing Facility	Areas of Davco tank potentially septic	<ul style="list-style-type: none"> - Remove septic wastewater & bio-solids - Develop plan for better air distribution
Dumpsters under Influent Screens	Accumulated screenings	<ul style="list-style-type: none"> - Construct fence around perimeter of dumpster area to reduce air flow - Increase cleaning frequency
Drying Beds	Material from lift stations and storm sewers stored on drying bed	<ul style="list-style-type: none"> - Stop using drying beds closest to Donner Rd - Construct fence around rear drying beds - Immediately cover any deposited solids with lime
Influent Splitter Box	Currently, sludge wasting process stops pumping of return activated sludge which results in only raw wastewater in splitter box	<ul style="list-style-type: none"> - Explore peroxide injection between headworks and splitter box - Develop means to pump return activated sludge to splitter box during the wasting process
Sludge truck & truck cleaning area	Truck itself, accumulated sludge at truck cleaning area	<ul style="list-style-type: none"> - Hose down truck cleaning area after rinsing roll off container and truck - Stop parking truck adjacent to Donner Rd

We will keep you posted on our progress with implementing the proposed action plan as well as update you with any other areas we identify that may be producing odors.

TS/s

Attachment: WWTF aerial photo w/ potential odor producing areas identified



**Atlantic Beach WWTF
Potential Odor Producing Areas**